



**Erdene Resource Development Corp.**

---

**Altan Nar Gold & Base  
Metal Discovery**

Drilling Update – 26<sup>th</sup> Jan 2012

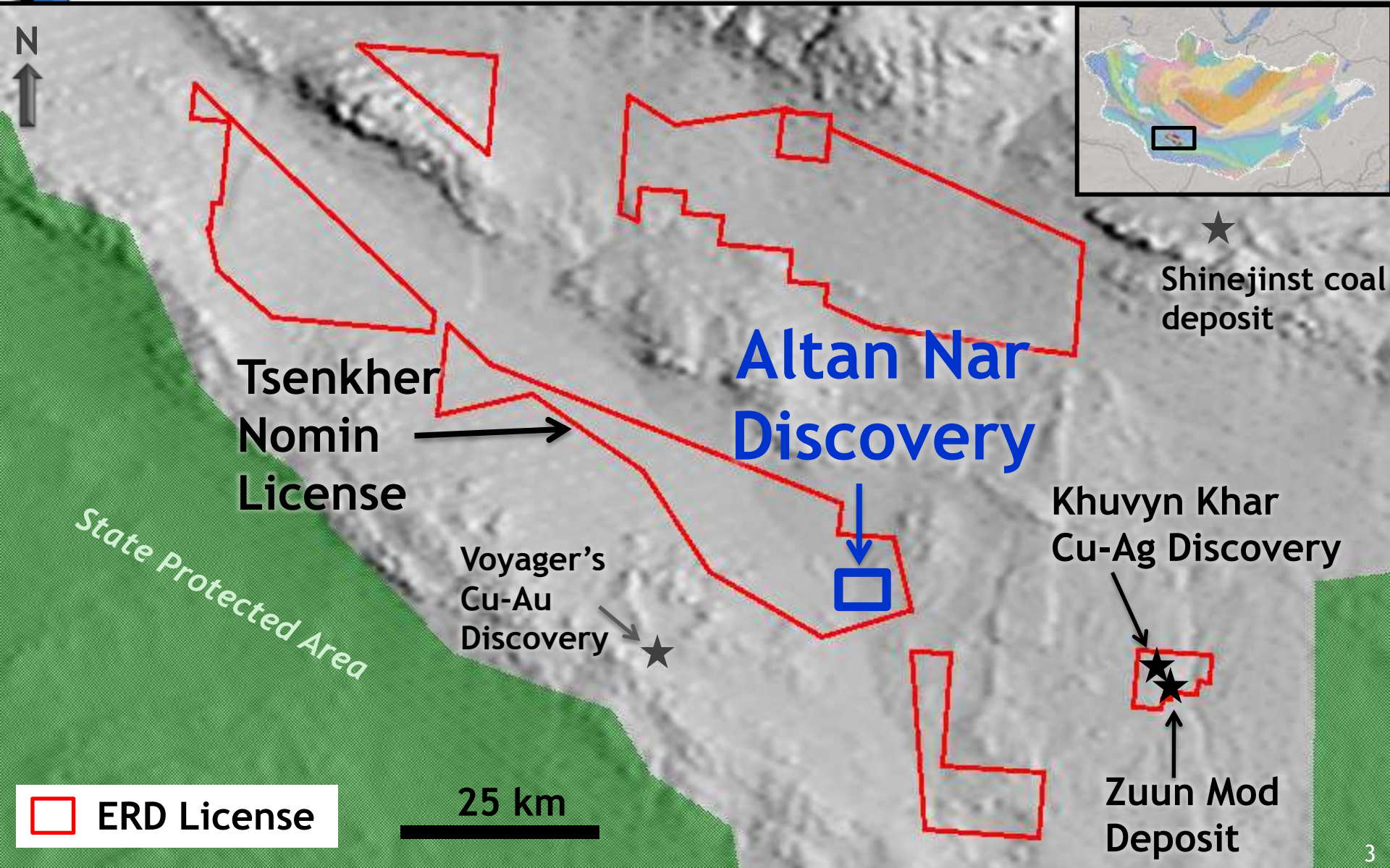
# FORWARD-LOOKING STATEMENTS



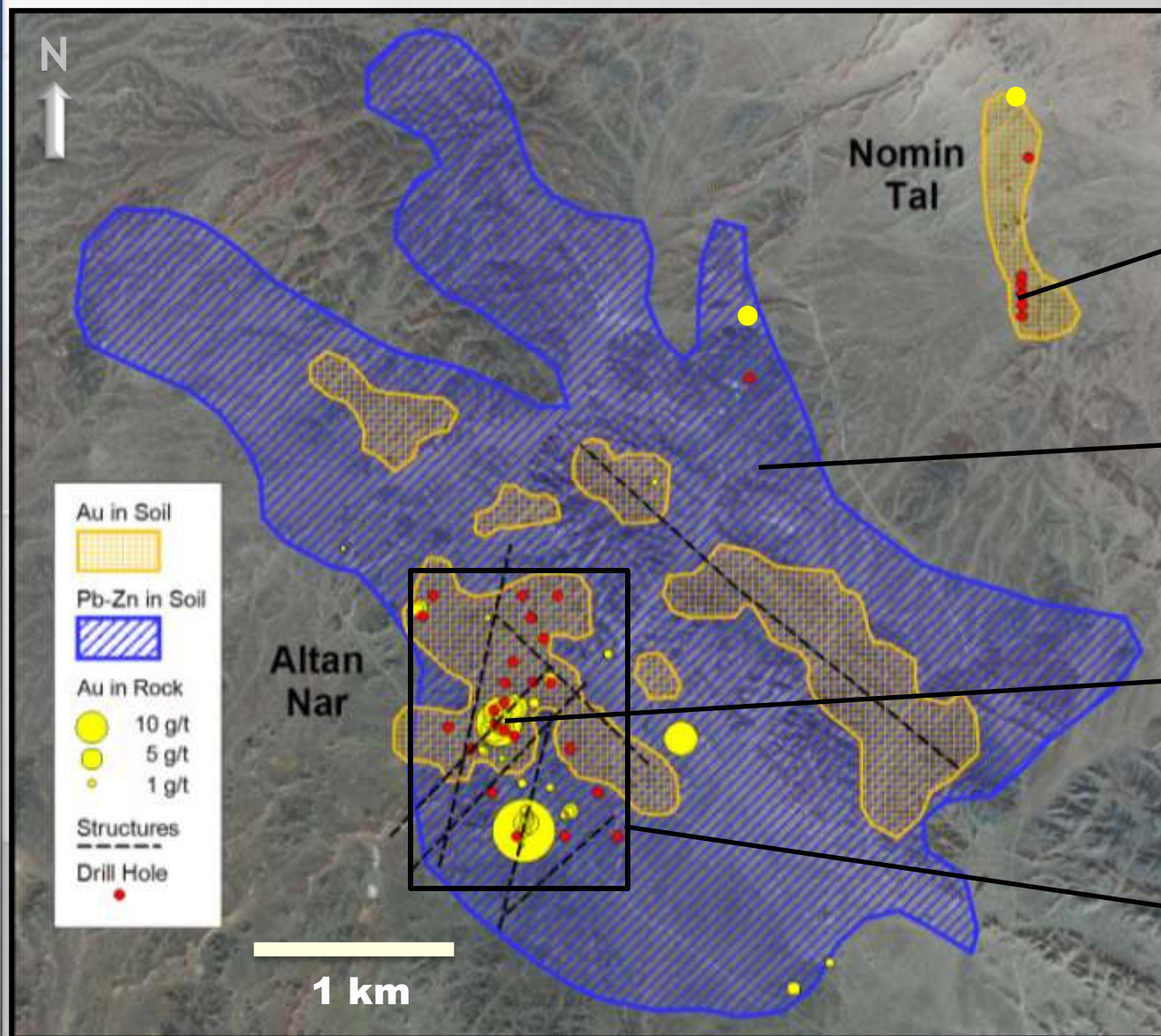
Certain information regarding **Erdene** ("the Company") contained herein may constitute forward-looking statements within the meaning of applicable securities laws. Forward-looking statements may include estimates, plans, expectations, opinions, forecasts, projections, guidance or other statements that are not statements of fact. Although the Company believes that the expectations reflected in such forward-looking statements are reasonable, it can give no assurance that such expectations will prove to have been correct. The Company cautions that actual performance will be affected by a number of factors, many of which are beyond the Company's control, and that future events and results may vary substantially from what the Company currently foresees. Factors that could cause actual results to differ materially from those in forward-looking statements include market prices, exploitation and exploration results, continued availability of capital and financing and general economic, market or business conditions.

The Company's forward-looking statements are expressly qualified in their entirety by this cautionary statement. The information contained herein is stated as of the current date and subject to change after that date.

# Altan Nar Regional Location



# Surface Mineralization with Drillholes



Exploration Highlights  
Pre-November  
Program 2H 2011

**June 2011**  
Initial drilling

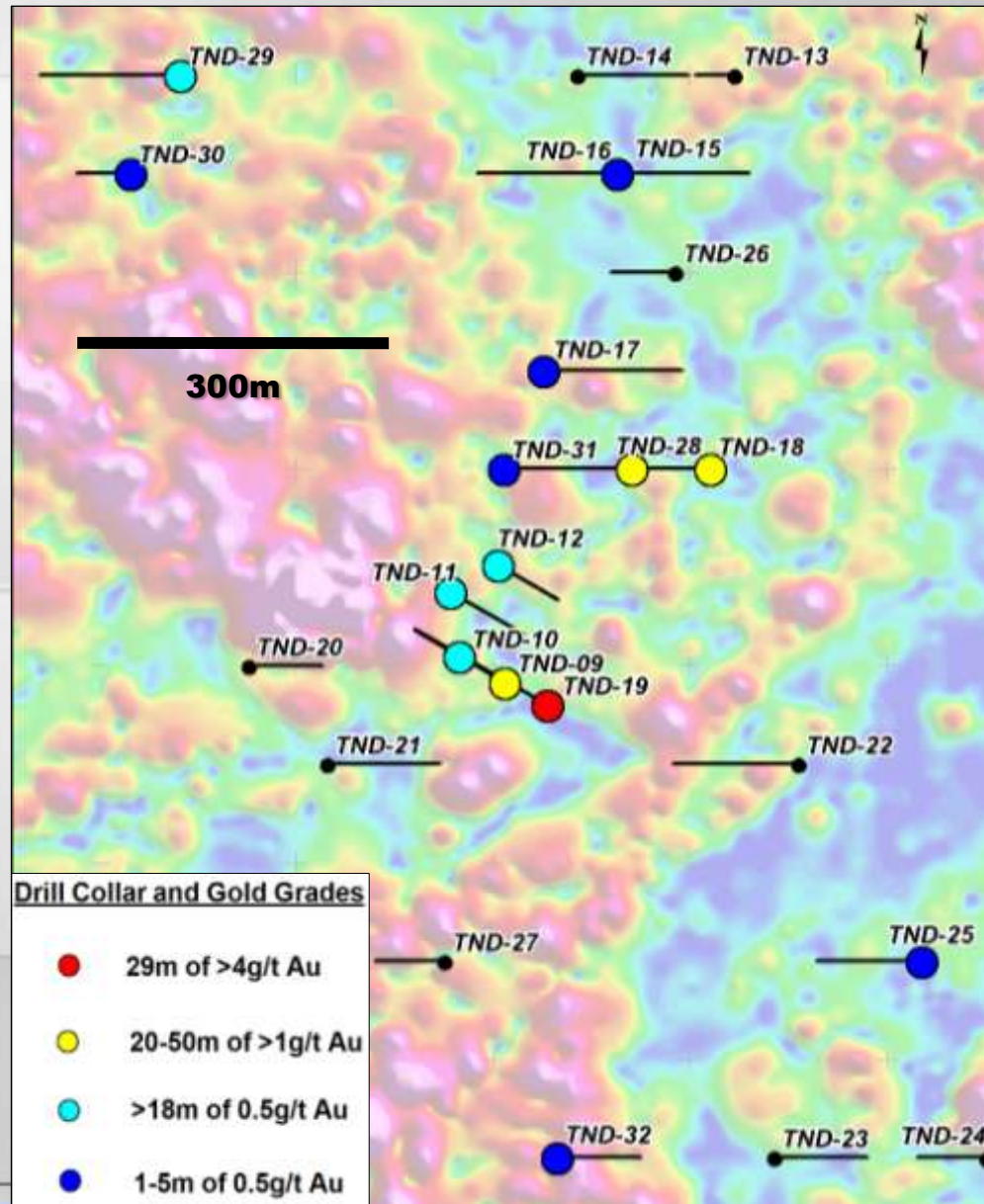
**Sept 2011**  
Geochemical survey  
defines major gold  
and base metal  
anomaly

**Oct 2011**  
Drilling confirms  
significant gold-  
polymetallic  
discovery

**Nov-Dec 2011**  
Shallow 20 drill hole  
program completed

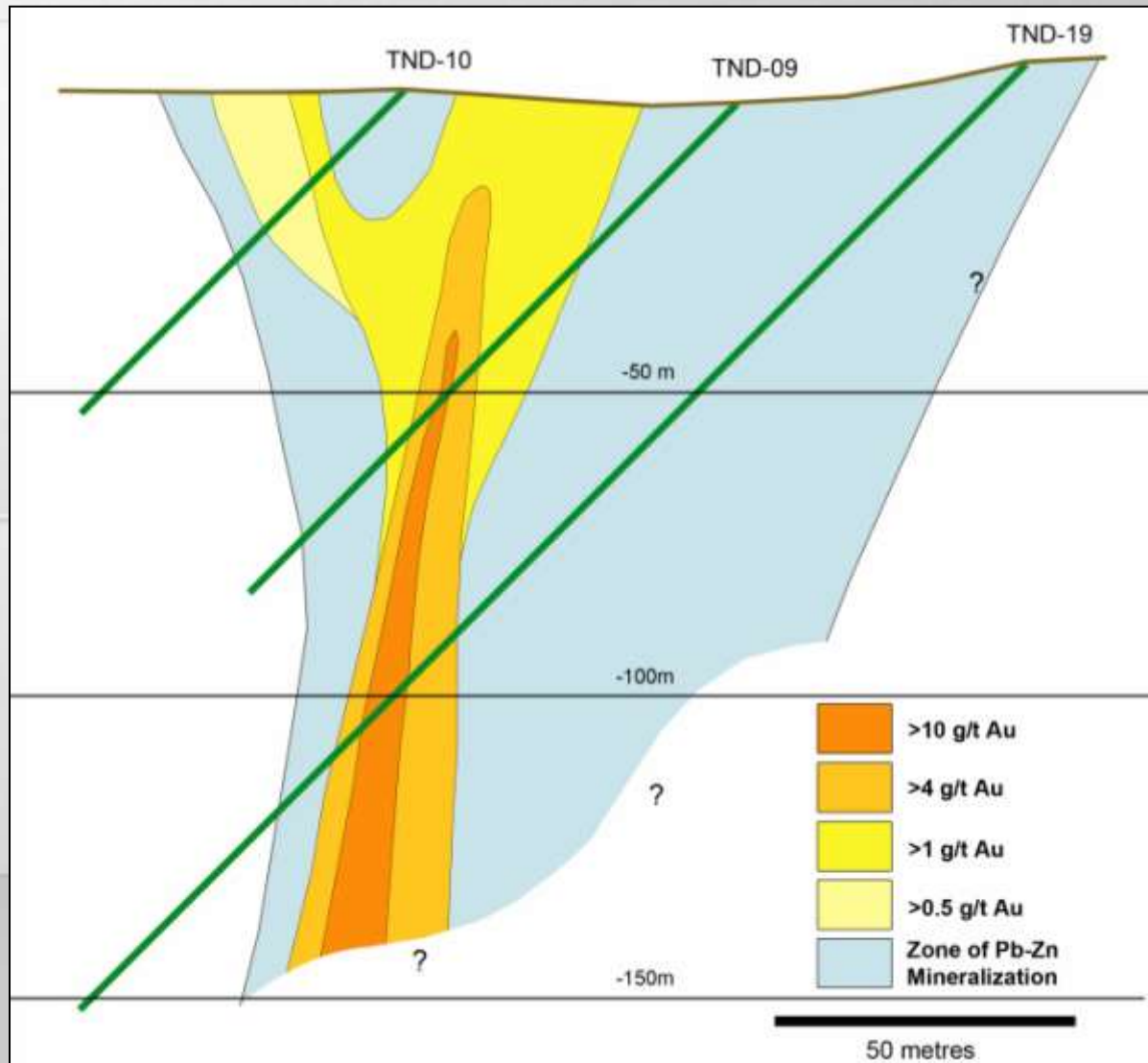
# Plan Map with Drill Collars and Gold Grades

## Magnetic Base Map



# Cross-Section

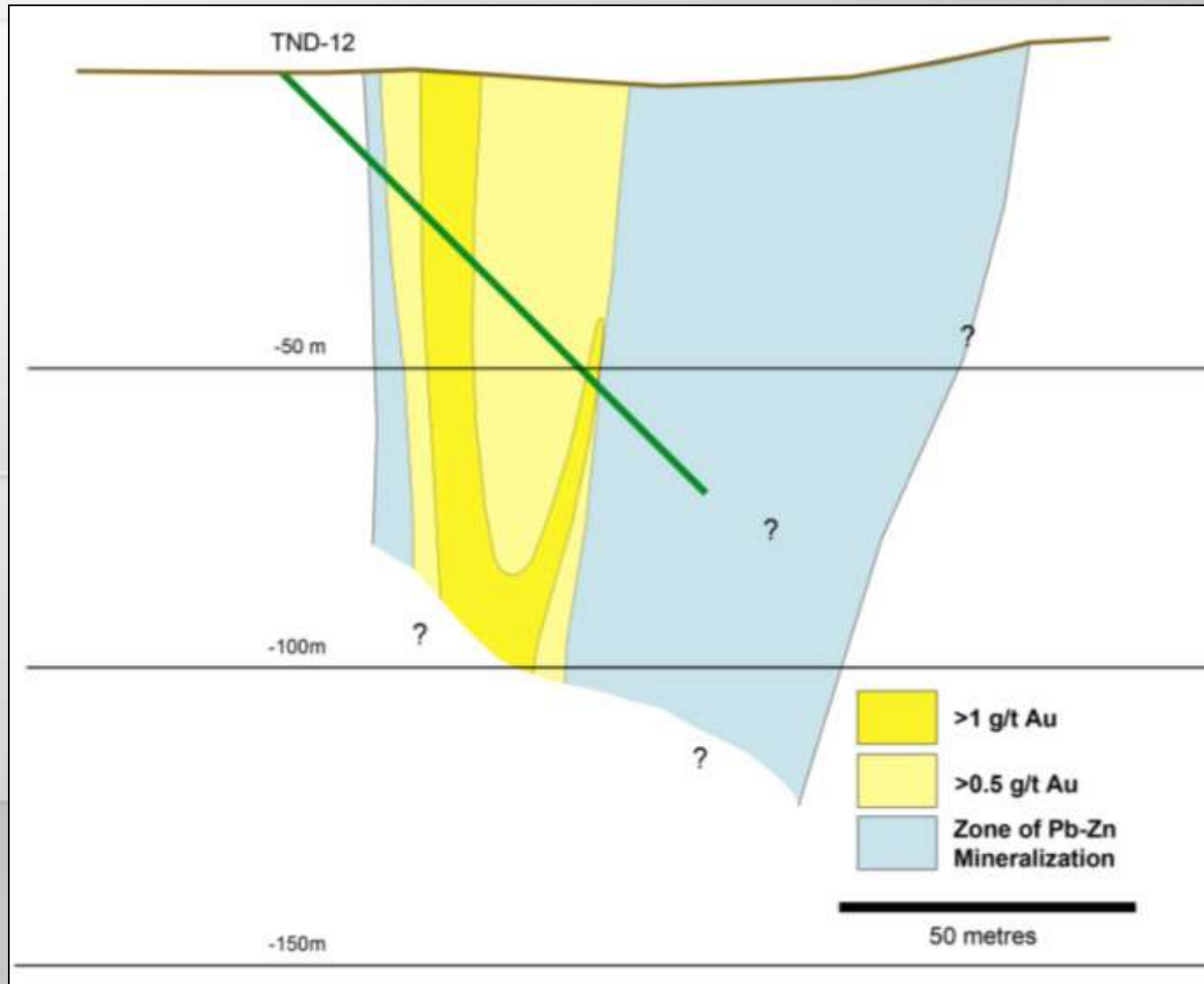
Drill Holes TND-10, TND-09, and TND-19





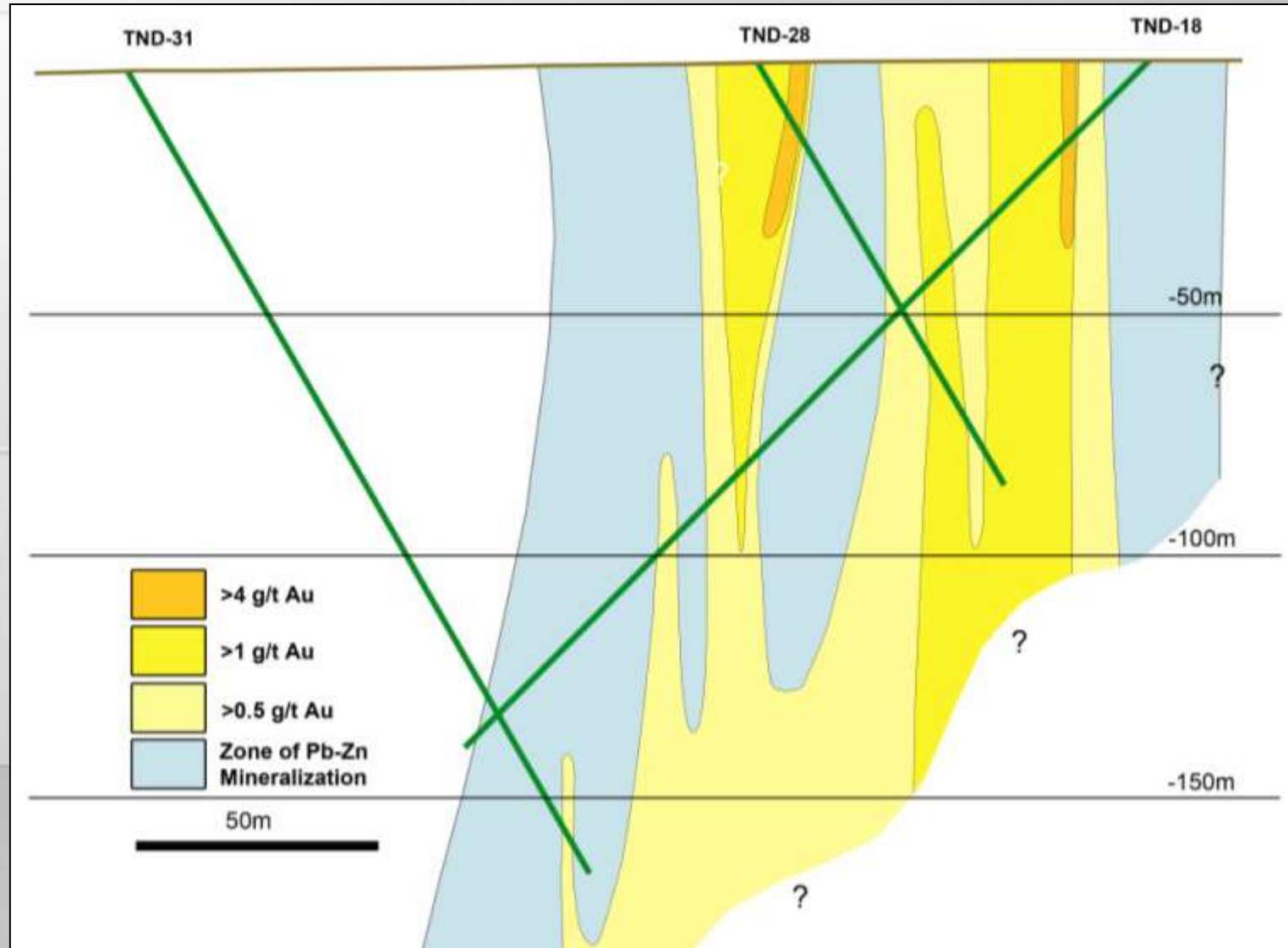
# Cross-Section

## Drill Hole TND-12



# Cross-Section

Drill Holes TND-31, TND-28, and TND-18



# Drill Result Highlights



- Gold Equivalent is provided to give clarity to the potential metal value in this polymetallic mineralized system. The potential recoverable value will be determined only when metallurgical studies are complete. The gold equivalent was calculated using US\$1200 Au oz, \$20 Ag oz, 0.68 per lb for both Pb and Zn

Hole #	Total Depth (m)	Depth (m)						Au Equivalent g/t	
		From	To	Width (m)	Au (g/t)	Ag (g/t)	Pb (%)		Zn (%)
TND-09	111	20	75	<b>55</b>	<b>1.02</b>	11.6	0.26	0.48	<b>1.50</b>
Incl		50	73	<b>23</b>	<b>2.07</b>	23.0	0.26	0.61	<b>2.78</b>
Incl		55	63	<b>8</b>	<b>3.91</b>	17.4	0.15	0.42	<b>4.41</b>
TND-10	75	0	40	<b>40</b>	<b>0.32</b>	3.0	0.39	0.23	<b>0.61</b>
Incl		15	19	<b>4</b>	<b>0.96</b>	12.0	2.17	0.37	<b>2.14</b>
TND-11	120	39	71	<b>32</b>	<b>0.37</b>	3.6	0.21	0.48	<b>0.70</b>
Incl		48	66	<b>18</b>	<b>0.56</b>	5.7	0.26	0.5	<b>0.95</b>
Incl		48	51	<b>3</b>	<b>1.21</b>	3.0	0.65	1.04	<b>1.91</b>
Incl		62	64	<b>2</b>	<b>1.24</b>	17	0.39	0.6	<b>1.90</b>
And		95	98	<b>3</b>	<b>0.67</b>	13	0.22	0.42	<b>1.13</b>
TND-12	100	28	76	<b>48</b>	<b>0.51</b>	8.6	0.24	0.83	<b>1.07</b>
incl.		36	46.5	<b>10.5</b>	<b>1.20</b>	16.0	0.17	0.41	<b>1.69</b>
incl.		74	76	<b>2</b>	<b>1.33</b>	48.0	0.27	1.22	<b>2.70</b>
TND-15	190	51	52	<b>1</b>	<b>0.50</b>	3.0	0.08	0.30	<b>0.70</b>
		103	105	<b>2</b>	<b>0.55</b>	0.5	0	0.01	<b>0.56</b>
TND-16	220	27	28	<b>1</b>	<b>0.69</b>	2.0	0.16	0.23	<b>0.87</b>
And		34	39	<b>5</b>	<b>0.66</b>	2.4	0.17	0.25	<b>0.86</b>
Incl		37	39	<b>2</b>	<b>1.44</b>	1.5	0.06	0.18	<b>1.55</b>
And		167	168	<b>1</b>	<b>0.58</b>	3.0	0.82	0.43	<b>1.11</b>
And		170	171	<b>1</b>	<b>0.64</b>	0.0	0.13	0.22	<b>0.77</b>
TND-17	200	5	6	<b>1</b>	<b>1.70</b>	4.0	0.13	0.20	<b>1.89</b>

# Drill Result Highlights Continued



Hole #	Total Depth (m)	Depth (m)		Width (m)	Au (g/t)	Ag (g/t)	Pb (%)	Zn (%)	Au Equivalent g/t
		From	To						
TND-18	200	12	137	<b>125</b>	<b>0.35</b>	3.8	0.34	0.34	<b>0.68</b>
Incl		20	43	<b>23</b>	<b>0.99</b>	10.0	0.97	0.67	<b>1.79</b>
Incl		20	23	<b>3</b>	<b>4.53</b>	8.7	0.69	0.68	<b>5.19</b>
Incl		55	63	<b>8</b>	<b>1.07</b>	11.1	1.20	1.17	<b>2.17</b>
Incl		55	57	<b>2</b>	<b>2.09</b>	35.0	4.11	4.17	<b>5.87</b>
Incl		116	117	<b>1</b>	<b>1.50</b>	17	0.08	0.28	<b>1.92</b>
Incl		126	127	<b>1</b>	<b>1.07</b>	3	0.01	0.16	<b>1.18</b>
Incl		136	137	<b>1</b>	<b>1.15</b>	2	0.12	0.21	<b>1.31</b>
TND-19	220	128	157	<b>29</b>	<b>4.29</b>	24.1	0.13	0.44	<b>4.90</b>
Incl		141	152	<b>11</b>	<b>9.06</b>	22.7	0.2	0.73	<b>9.77</b>
Incl		144	147	<b>3</b>	<b>16.10</b>	11.7	0.22	0.88	<b>16.67</b>
TND-25	150	29	36	<b>7</b>	<b>0.68</b>	3.7	0.07	0.33	<b>0.89</b>
Incl		34	35	<b>1</b>	<b>2.86</b>	9	0.08	0.31	<b>3.15</b>
TND-28	100	0	21	<b>21</b>	<b>1.20</b>	17.5	0.14	0.23	<b>1.63</b>
Incl		12	19	<b>7</b>	<b>3.35</b>	46.9	0.14	0.27	<b>4.28</b>
Incl		14	18	<b>4</b>	<b>5.15</b>	74.5	0.19	0.31	<b>6.56</b>
And		60	100	<b>40</b>	<b>0.54</b>	6.4	0.18	0.19	<b>0.79</b>
Incl		77	89	<b>12</b>	<b>1.16</b>	9.9	0.18	0.22	<b>1.48</b>
TND-29	200	64	82	<b>18</b>	<b>0.52</b>	2.1	0.36	0.62	<b>0.93</b>
Incl		64	65	<b>1</b>	<b>3.11</b>	6	1.07	1.58	<b>4.23</b>
Incl		70	74	<b>4</b>	<b>1.03</b>	6.5	1.18	1.94	<b>2.34</b>
TND-30	160	52	53	<b>1</b>	<b>0.56</b>	1.0	0	0.01	<b>0.58</b>
Incl		65	68	<b>3</b>	<b>2.23</b>	1.3	0.16	0.3	<b>2.42</b>
TND-31	190	184	185	<b>1</b>	<b>1.27</b>	0.0	0.1	0.34	<b>1.44</b>
TND-32	120	52	54	<b>2</b>	<b>2.07</b>	15.5	3.81	6.28	<b>6.23</b>



# Altan Nar - Plans



## ▶ 4<sup>th</sup> Quarter 2011:

- ▶ 3,000 m (20 hole) Drill Program (Completed)

## ▶ 1<sup>st</sup> Quarter 2012:

- ▶ Drill Results
- ▶ Compilation and Interpretation

## ▶ 2<sup>nd</sup> Quarter 2012:

- ▶ Expand Detailed Surface Exploration (Geochemistry and Geophysics) Over Entire 2 km x 3 km Area
- ▶ Expanded Drill Program